

2025.10-12 sport-hannou



Oil Per Board: **50 mu** Oil Pattern Distance: **41 Feet** Volume Oil Total: **28.85 mL** Total Boards Crossed: **577 Boards**
 Forward Oil Total: **18.8 mL** Reverse Oil Total: **10.05 mL**
 Forward Boards Crossed: **376 Boards** Reverse Boards Crossed: **201 Boards**

	Start	Stop	Loads	Speed	Crossed	Start	End	Feet	T.Oil
1	2L	2R	3	14	111	0.0	3.9	3.9	5550
2	5L	5R	1	10	31	3.9	5.3	1.4	1550
3	8L	8R	1	14	25	5.3	7.2	1.9	1250
4	9L	9R	2	14	46	7.2	11.1	3.9	2300
5	10L	10R	2	14	42	11.1	15.0	3.9	2100
6	11L	11R	3	14	57	15.0	20.9	5.9	2850
7	12L	12R	2	18	34	20.9	26.0	5.1	1700
8	13L	13R	2	18	30	26.0	31.1	5.1	1500
9	2L	2R	0	22	0	31.1	41.0	9.9	0

Forward Reverse More Info

Report Date

9/28/2025

Conditioner:
Type In or
Select One

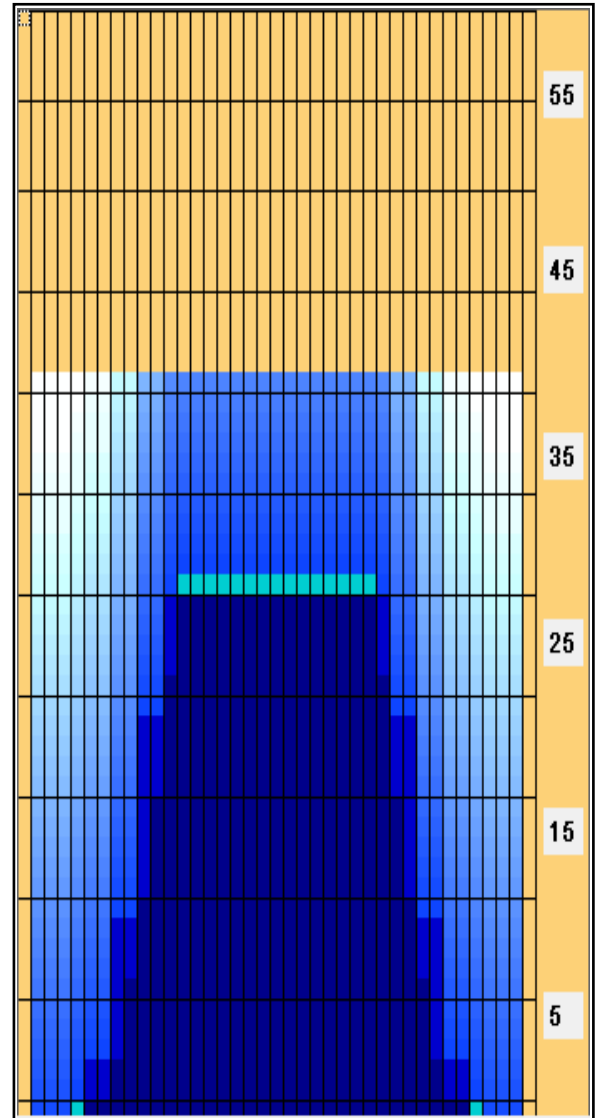
TransferType:
Type In or Select
One

Forward Oil

Reverse Oil

Combined Oil

Buff Area



	Start	Stop	Loads	Speed	Crossed	Start	End	Feet	T.Oil
1	2L	2R	0	30	0	41.0	30.0	-11.0	0
2	12L	12R	2	22	34	30.0	23.8	-6.2	1700
3	10L	10R	3	22	63	23.8	14.5	-9.3	3150
4	8L	8R	3	18	75	14.5	6.9	-7.6	3750
5	6L	6R	1	14	29	6.9	5.0	-1.9	1450
6	2L	2R	0	14	0	5.0	0.0	-5.0	0

Forward Reverse More Info

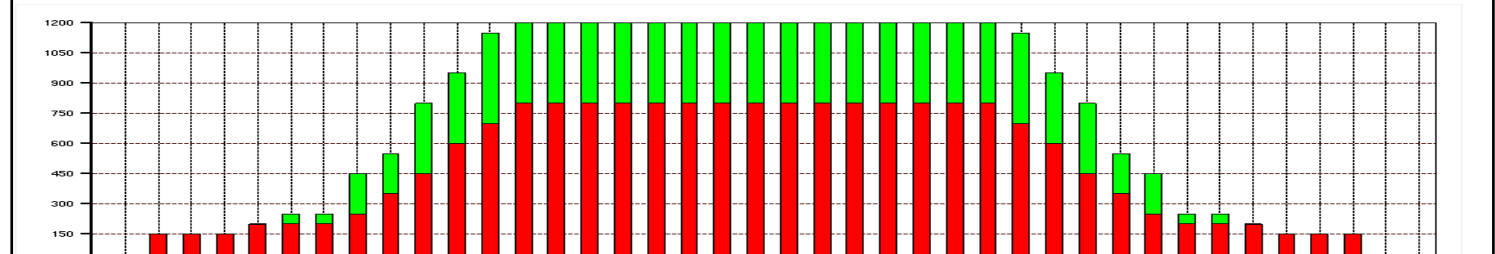
Arrow Zone
Ratios

Item	2-5L:16L-20	6-10L:16-20	11-15L:16L-20	16L-20:20-16R	16L-20:20-16R	20-16R:15-11R	20-16R:10-6R	20-16R:5-2R
ul Arrow	162.5	460	1170	1250	1250	1170	460	162.5
Zone Ratio	7.69	2.72	1.07	1	1	1.07	2.72	7.69

Track Zone
Ratios

Item	3L-7L:18L-18R	8L-12L:18L-18R	13L-17L:18L-18R	18L-18R:17R-13R	18L-18R:12R-8R	18L-18R:7R-3R
Description	Outside Track:Middle	Middle Track:Middle	Inside Track:Middle	Middle: Inside Track	Middle:Middle Track	Middle:Outside Track
Track Zone Ratio	6.25	1.6	1	1	1.6	6.25

Forward Reverse



2025.10-12 sport-hannou



Oil Per Board:	50 mu	Oil Pattern Distance:	41 Feet	Volume Oil Total:	28.85 mL	Total Boards Crossed:	577 Boards
Forward Oil Total:	18.8 mL			Reverse Oil Total:	10.05 mL		
Forward Boards Crossed:	376 Boards			Reverse Boards Crossed:	201 Boards		

Name of Event

Dates of Event

Location of Event

The following are the details regarding the lanes and conditioning:

Number of Lanes:

Surface:

Pinsetters:

Conditioner:

Cleaner:

Lane Machine:

Enter here additional specific information about the patterns used in the tournament, conditioning date times, frequency of conditionings etc.

Length of patterns:

See graphs for overhead view on conditioning patterns and volume of oil.

Enter any additional tournament information here, number of players, tournament type, special rules, format etc.

Technician Name, Technical Delegate

Name of Event